

USER GUIDE

8/12 GANG WIRELESS SWITCH PANEL



iTECHWORLD
THE POWER EXPERT

CONTENTS

1.	Overview	3
	Key Features	3
	Package Contents	4
	Unit Diagram	5
2.	Installation	6
	Mounting	6
	Accessory Connections	9
	Battery Connection	11
3.	Operation	12
	Powering On	12
	Pairing	12
	Backlighting	13
4.	Charging Time & Power Display	15
5.	Specifications	15
6.	Troubleshooting	16
7.	Safety Precautions	17
8.	Contact Us	Back Page

OVERVIEW

The iTechworld 8/12 Gang Wireless Switch Panel is the remote switching solution that offers reliable and flexible control over your accessories in your 12V or 24V battery systems. It allows wireless operation from distances up to 60 metres, helping reduce the need for complex wiring or hard to access manual switches. An RGB backlight with five brightness levels guarantees visibility in low-light conditions.

With a high output capacity (60A/80A), a dual input layout, spare fuses and an installation kit included, the switch panel is designed for straightforward integration into existing electrical systems. It's suitable for applications including 4WD setups, caravans, marine systems, and off-grid power solutions.

KEY FEATURES

- Wireless control up to 60m
- Rechargeable battery
- 60A/80A output capacity
- RGB backlight
- IP65 dust and waterproof rated
- Dual input layout
- Spare fuses and install kit included

PACKAGE CONTENTS



8/12 Gang Wireless Switch Panel



Control Box



User Guide



Antenna



8/12 Gang Switch Panel Holder



5pcs Mounting Kit



Circuit Breaker 60A/80A



Accessory signal cabling



USB to USB-C Cable



2A fuse tap



24pcs Hardware Kit



Screwdriver



Switch Panel Stickers



2 x Positive Cables &
1 x Negative Cable



10x Cable Ties

UNIT DIAGRAM



- | | |
|----------------------------|-----------------------|
| ① BATTERY STATUS INDICATOR | ⑤ ON/OFF CONTROL |
| ② USB-C INPUT PORT | ⑥ BRIGHTNESS CONTROL |
| ③ MAIN POWER CONTROL | ⑦ RGB CONTROL |
| ④ BATTERY LEVEL INDICATOR | ⑧ SWITCH PANEL HOLDER |

INSTALLATION

MOUNTING

NOTE: The antenna is supplied separately in the box and must be connected to the control box before use. Screw the antenna onto the threaded plug located on the control box. For best signal performance, route the antenna outside.

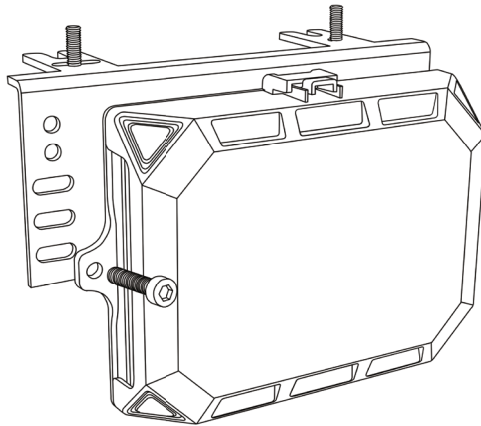
To install the control box and mount the switch panel, follow the steps below:

CONTROL BOX

You can choose between fixed mounting or flush mounting:

Fixed Mounting

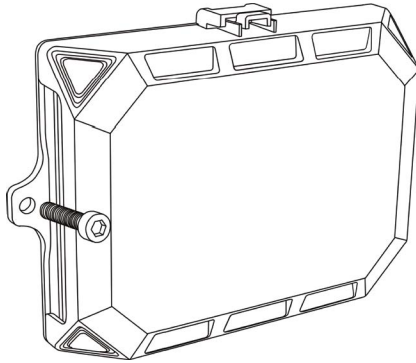
1. Choose a flat, solid surface, protected from moisture.
2. Install the antenna by screwing it onto the threaded connector in the control box.
3. Align the supplied mounting bracket with the holes on the control box.



4. Secure the bracket using the included bolts.
5. Mount the bracket and control box to your selected surface using the included hardware.

Flush Mounting

1. Align the control box directly with your mounting surface.
2. Use the built in mounting holes and the included bolts to secure it in place.



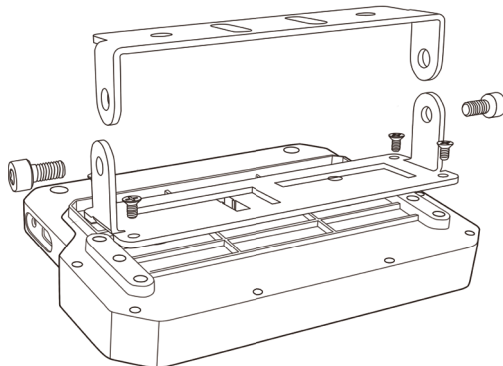
3. Install the antenna by screwing it onto the threaded connector in the control box. Make sure it is positioned for optimal signal.

SWITCH PANEL

You can choose between Adjustable Mounting or Flush Mounting:

Adjustable

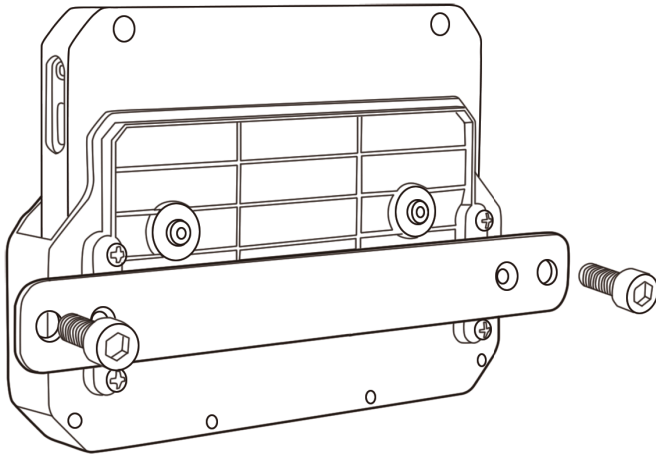
1. Assemble the adjustable mounting bracket using the included bolts and Allen key.



1. Position the base plate on your selected surface and secure it using the included hardware.
2. Adjust the angle of the switch panel to suit your setup.
3. Tighten all bolts to lock the position in place.

Flush

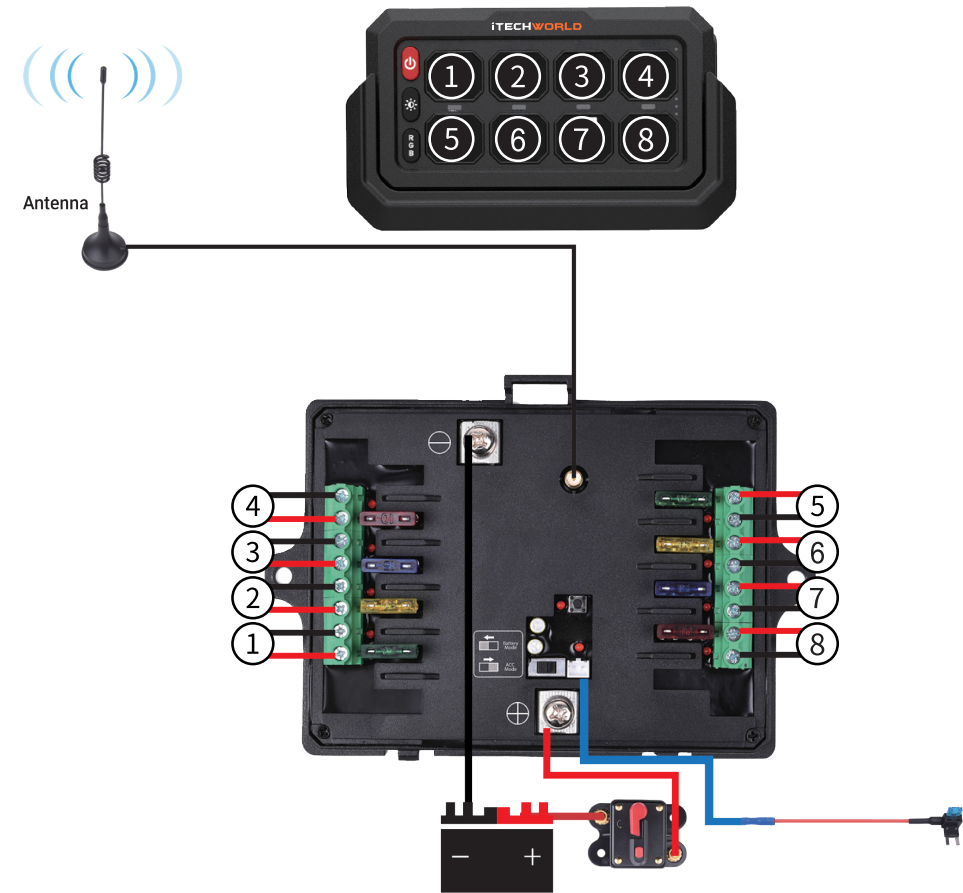
1. Align the flush mount bracket with your mounting surface.



2. Secure the bracket using the included screws.

ACCESSORIES CONNECTION

8 Gang Wiring Diagram:



① 30A MAX

② 20A MAX

③ 15A MAX

④ 10A MAX

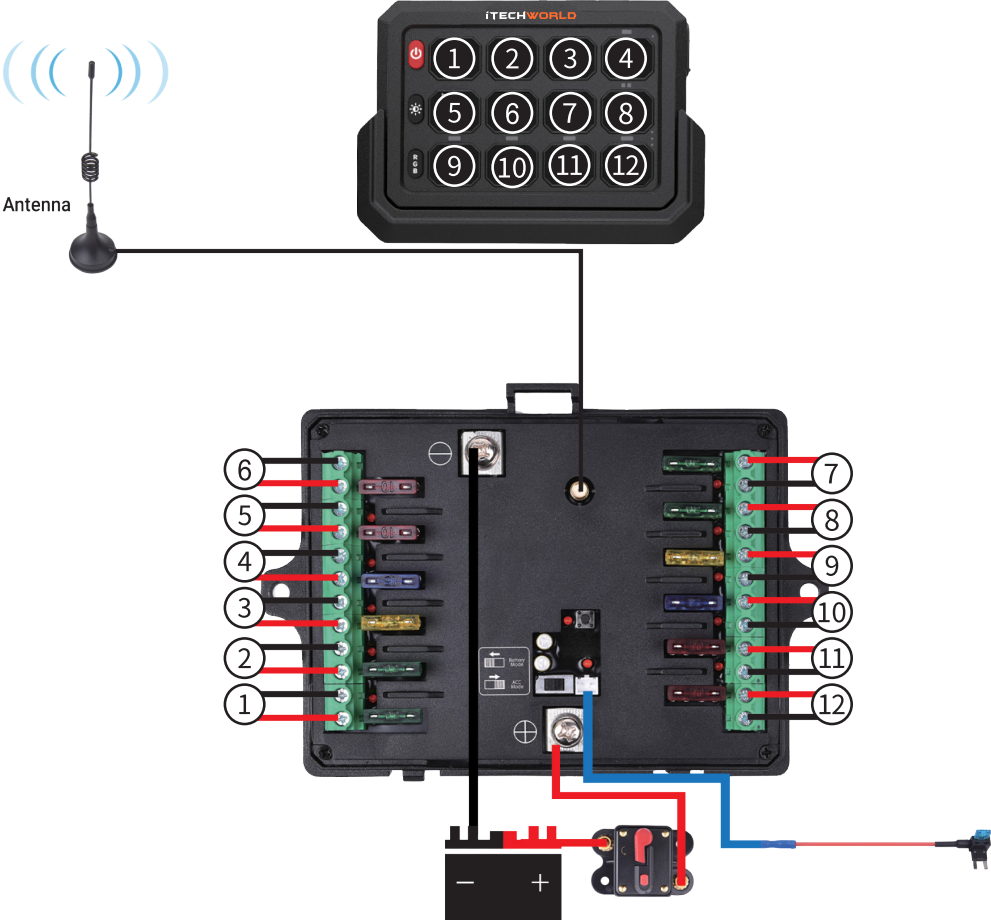
⑤ 30A MAX

⑥ 20A MAX

⑦ 15A MAX

⑧ 10A MAX

12 Gang Wiring Diagram:



① 30A MAX

② 30A MAX

③ 20A MAX

④ 15A MAX

⑤ 10A MAX

⑥ 10A MAX

⑦ 30A MAX

⑧ 30A MAX

⑨ 20A MAX

⑩ 15A MAX

⑪ 10A MAX

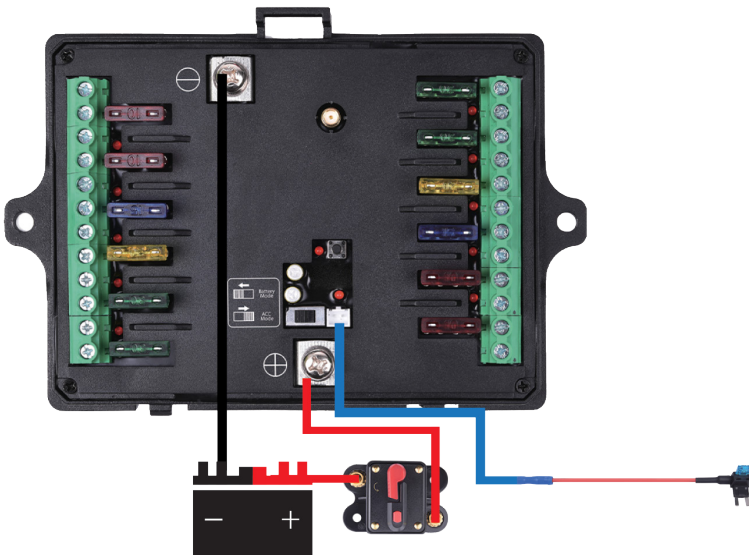
⑫ 10A MAX

BATTERY CONNECTION

Use the included cables and circuit breaker to safely connect the control box to your 12V or 24V battery system.

1. Ensure the control box is securely mounted and the antenna is connected.
2. Connect the positive cable from the control box positive terminal to the positive terminal of your battery. Install the included circuit breaker within this line.
3. Connect the negative cable from the control box negative terminal to the negative terminal of the battery. Alternatively, you may use a clean, unpainted chassis grounding point if your battery is properly grounded to the vehicle chassis.

The control box has a sliding power switch that lets you choose between battery mode and ACC mode. In both modes, the control box must be connected to a 12V or 24V battery. When set to ACC mode, the unit will only power on when it receives a 12V or 24V signal from your vehicle's ignition. To enable this feature, connect the included fuse tap (shown in blue below) to a power source that switches on and off with your vehicle's ignition, such as an accessories fuse in your fuse box.



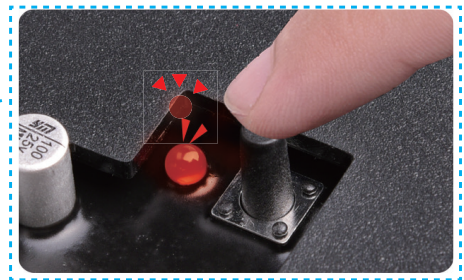
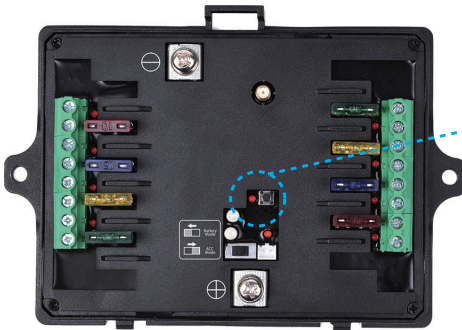
OPERATION

POWERING ON

Before using the switch panel, switch the Main Power Control Switch to the ON position. This enables internal power and prepares the unit for use.



Next, turn on the control box by sliding the Control Box Power Switch to your selected mode (Battery or ACC). The control box must be connected to a 12V or 24V battery in either case.



Once both switches are on, press the ON / OFF control button on the front of the switch panel. The backlight will illuminate, and the panel will enter standby mode, ready to control your connected accessories.

NOTE: The Main Power Control Switch can be used to completely power down the unit when not in use, helping to prevent unnecessary battery drain.

PAIRING

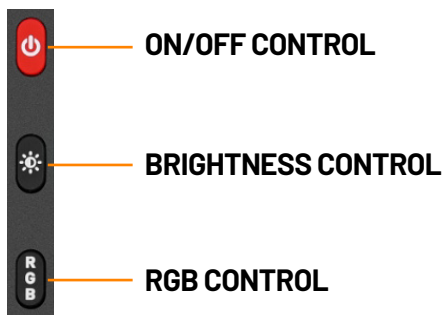
Your unit is pre-paired by iTechworld for immediate use. If re-pairing is ever required, simply follow the steps below

1. Turn on both the switch panel and the control box.
2. Press and hold the pairing button on the control box until the LED indicator begins flashing red.
3. While the light is flashing, press and hold the RGB button on the switch panel. The panel backlight will turn red.
4. When the indicator light on the control box stays solid and the panel light returns to normal, pairing is complete.



BACKLIGHTING

The switch panel includes multiple backlight and button activation modes. These allow you to customise how each switch behaves when pressed.



To enter backlight setup:

1. With the unit powered on, press and hold the brightness control. The backlight will flash red, indicating you've entered the backlight mode selection menu.
2. Press the brightness control again to cycle through the three available modes:
 - **Red flash – Press and Hold Mode** (In this mode, the connected accessory will only remain on while the switch is held down. Releasing the switch turns it off.)
 - **Blue flash – Slow Flash Mode** (The accessory flashes slowly when the button is pressed. Press again to turn it off.)
 - **Fast blue flash – Fast Strobe Mode** (The accessory flashes rapidly when the switch is pressed. Press again to turn it off.)

While in any of the above modes:

1. Press the switch you want to assign the mode to. A red light on top of each switch will remain on to confirm selection.
2. Press the ON / OFF button to save your selection and exit setup.

NOTE: To return a switch to standard mode, repeat the steps above and press the switch again in the specific menu until the red light on top turns off.

Brightness:

You can adjust the brightness of the switch panel backlight to suit different environments.

Press the brightness button to cycle through the available levels:

0% - 20% - 40% - 60% - 80% - 100%

The brightness will increase with each press, then loop back to 0% once 100% is exceeded.

RGB:

You can customise the switch panel's RGB backlight to suit your setup.

Press the RGB button to cycle through the available options:

Red - Yellow - Orange - Green - Light Blue - Blue - Pink - White - RGB Slow Change with Transition - RGB Fast Change - RGB Fast Change with Transition - Red

The colour will change with each press, cycling through static colours first, followed by multi colour RGB modes. Once the final mode is reached, the sequence will loop back to red.

CHARGING TIME & POWER DISPLAY

When connected to power, the battery status indicator on the wireless switch panel will turn red to show it is charging. Once fully charged, the indicator will turn green. A three level battery indicator below displays remaining capacity:

- one white light indicates low
- two lights indicate medium
- three lights indicate full

Charging takes approximately 2–3 hours, with a full charge lasting 5–6 days.

SPECIFICATIONS

General		
Model Name	8 Gang Switch Panel	12 Gang Switch Panel
Dimensions (LxHxW)	127 x 14 x 69mm	127 x 14 x 89mm
Weight	2kg	
Operating Temperature	-40C ~ 85C	
No Load Draw	<3mA	
Voltage	12V / 24V	
Max 12V Current	720W 60A	960W 160A
Max 24V Current	1440W 60A	1920W 160A
Fuse Ratings	2 x 30A, 2 x 20A, 2 x15A, 2 x 10A	4 x 30A, 2 x 20A, 2 x 15A, 4 x10A
Spare Fuse Ratings	2 x 30A, 1 x 20A, 1 x 15A, 1 X 10A	2 x 30A, 1 x 20A, 1 x 15A, 1 x 10A
IP Rating	IP65	

TROUBLESHOOTING

Device not responding:

1. Check the battery level of the switch panel. If it's low, fully recharge the panel before use.
2. Inspect the included fuses and the circuit breaker. Replace any blown fuses with the correct type and rating.
3. Ensure that the total connected load does not exceed the panel's output rating (60A or 80A, depending on the model).
4. Confirm that the switch panel is within the wireless range (up to 60 metres), and that there are no major obstructions between the panel and the control box.

Connection issues:

1. Hold the pairing button on the control box and the RGB button on the switch panel to re-pair.. For full instructions, refer to the Pairing section.

Not charging:

1. Some charging bricks or adapters may not supply enough power to activate charging. Try using a different power source, such as a higher output AC 240V to USB adapter.

SAFETY PRECAUTIONS

For safe operation and optimal performance, the 8 / 12 Gang Wireless Switch Panel must be installed and operated correctly. Please carefully read, understand, and follow all instructions and guidelines in this user guide. Failure to follow these instructions may result in damage to the unit, property, death, or serious injury.

Disclaimer: While iTechworld has taken every precaution to ensure the accuracy of the contents of this user guide, iTechworld assumes no responsibility for any errors or omissions..

Furthermore, all specifications and functionality may change without notice at any time.

It is best to view our website for the most up-to-date information.

WARNING:

Always isolate the vehicle battery or power source before installing, wiring, or performing maintenance on the switch panel or control box.

WARNING:

People with physical disabilities, visual, sensory, or mental impairments (including children) should not use this device. Children should be supervised to ensure they do not play with the switch panel.

WARNING:

Do not modify the switch panel or control box. Doing so will void your warranty and may result in electric shock, fire, serious injury, or death.

WARNING:

Do not drop the switch panel.

WARNING:

Only use the cables and accessories provided or recommended in this user guide. Using incorrect components may damage the switch panel or cause electrical failure.

WARNING:

Ensure the included fuses and circuit breakers are installed correctly.

WARNING:

Avoid using the switch panel in extreme temperatures, prolonged direct sunlight, or high humidity that exceeds its IP65-rated waterproof protection.

WARNING:

Do not use the switch panel or its accessories to power devices if any parts are damaged.

DANGER:

Do not disassemble or modify the unit(s); doing so may result in a risk of electrical shock, fire, death, or serious injury.

LIMITATIONS OF USE:

Do not use it in connection with life support systems or other medical equipment/devices. .

iTECHWORLD

THE POWER EXPERT

CONTACT US



1300 483 249



service@itechworld.com.au



www.itechworld.com.au



At iTechworld, we proudly lead the way in pioneering innovative off-grid power and battery solutions that bring cutting-edge technology to adventure seekers, remote workers, and outdoor enthusiasts across Australia. Since we began our journey all the way back in 2006, our passion has been to develop high-performance lithium batteries, solar panels, power stations, generators, and battery management systems tailored to caravans, camping, 4WDs, and off-grid living.

We believe in empowering people with reliable, portable, and efficient energy solutions, giving them the power they need—wherever their journey takes them. Our commitment to quality is unwavering, with every product rigorously tested to meet Australian conditions and backed by our knowledgeable power experts.

Driven by innovation, reliability, and sustainability, iTechworld is your trusted partner in power solutions, helping you stay powered anywhere, anytime.

iTechworld. The Power Expert.

LOVE YOUR 8/12 GANG WIRELESS SWITCH PANEL? [LEAVE A REVIEW](#)



Google
Reviews ★★★★★



**PRODUCT
REVIEW**
.COM.AU



Trustpilot
★★★★★